

Company Profile

Complex electronics development and series production from a single source

As a partner for complex electronics development and series production, we have been serving the entire value chain from a single source for 30 years. From the initial idea to the finished product, we solve individual and demanding customer tasks within the shortest possible time.

Competent in development

- Department with approx. one third of our highly qualified employees.
- Hardware development from analog and digital technology over power electronics to high frequency technology
- Software applications under Linux, Microsoft and real-time operating systems
- Firmware for different embedded systems from 8 to 32Bit
- Printed circuit board layout and construction
- Type testing: during development and for end products



Flexible Manufacturing

- State-of-the-art production technologies in the areas of assembly, machine soldering and mechanical processing
- From prototypes to large series production of 100.000 pieces / lot
- Printed circuit board assembly (SMD/THT) with components from a size of 0201
- Electronic device construction
- Extensive piece testing methods from AOI to Flying Probe
- Customized series programming




Intelligent in the solution

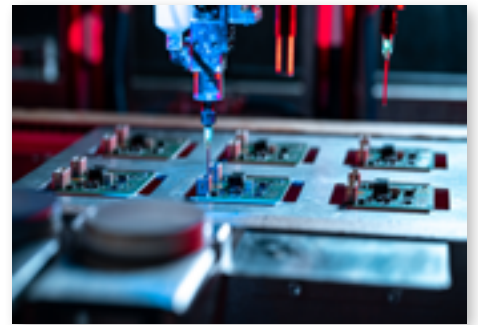
- From the specification development to the delivery of tested components
- Project management
- Hardware development
- Software and firmware development
- Printed circuit board layout / design
- Sample and test equipment construction
- Type testing



Success can be controlled

According to this motto dresden elektronik develops and manufactures customer-specific electronic solutions with currently about 100 employees. From development with type testing to series production of industrial electronic assemblies and systems, dresden elektronik offers everything from a single source.

Business Areas	Engineering Technology	Traffic Engineering	Wireless Technology / Phoscon
Products	Drive controls	Electronic timetable	Radio modules
	Industrial LED lights, LED displays	Dynamic Passenger Information	ustomized wireless technology
	Automatic test and inspection systems	Traffic signals	Products of wireless light control under the brand Phoscon
	Inline testing technology	Dynamic Wayfinding Systems	 Phoscon
Services	Complex contract development Type testing during development and for end products ESD-compatible prototype and series production Test systems for validation and production		



Engineering Technology

The foundation of dresden elektronik is the business unit engineering technology with a focus on contract development and manufacturing. Drive controls based on EtherCAT, which meet the safety requirements according to SIL3 in accordance with DIN EN 61508, are just as much a part of the customer solutions as the compact power current sources for currents up to 20 ADC. The industrial LED lights as a standard product are characterized by excellent illumination and low power consumption at the same time. An in-house test engineering development department is instrumental in the planning, design and construction of automatic test and inspection systems, modular expandable test equipment and stand-alone and inline testers.



Wireless Technology

The core competence of the latest business unit is low-power wireless technology for wireless sensor networks in accordance with the IEEE 802.15.4 standard. The product range extends from certified, application-ready wireless modules to complete solutions for home automation, since 2017 focusing on home automation under the Phoscon brand.



Traffic Engineering

The focus here is on control systems for the traffic management: traffic signal systems, modular LED displays for information systems information systems and dynamic wayfinding systems. The electronic timetable deZign was developed in-house as an e-paper-display. In addition to development and production, the service portfolio also includes planning, project planning, simulation and programming of the systems.



Our quality is your progress

dresden elektronik is regularly certified according to the ISO EN 9001 standard. The high quality standard guides us in our daily work. The inspection and test technology is an integral part of the manufacturing process and ensures the quality and reliability of our products. The basis of our success is our committed and competent staff and a continuous improvement process within the framework of quality management.



dresden elektronik ingenieurtechnik gmbh
Enno-Heidebroek-Straße 12
01237 Dresden | Germany
Telefon: +49 351 - 31 85 00
Telefax: +49 351 - 318 50 10
info@dresden-elektronik.de
www.dresden-elektronik.de